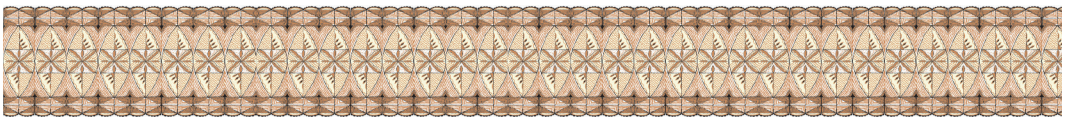




PACIFIC ISLANDS CENTRE

2022 Your Passport to Success

Growing Pacific Scholars
Orientation Week Guide





Pacific Welcome performance by Otago University Pacificana Group

CONTENTS

Welcome	2
Your enrolment and acceptance	4
Transition and orientation	6
Settling in	8
Dos and Don'ts of Orientation Week	10
Growing Pacific Scholars Orientation (GPS) Programme 2022	11
Essential forums for first-year Pacific students	12
Frequently asked questions by parents	14
Are you ready academically?	15
Key staff to contact	16



PACIFIC ISLANDS CENTRE MANAGER'S WELCOME

The University of Otago has had a long relationship with people of the Pacific who, whether Island-born or New Zealand-born, are high achievers.

The Pacific Islands Centre endeavours to ensure that all students are welcomed and see the Centre as an extension of home, as an extension of the vā (sacred space) – a home away from home. The Centre achieves this by providing academic, pastoral, social and spiritual guidance for all Pacific students.

We provide the cultural link for students and their parents/families to the University's teaching and research community. This continues to be well supported by the diverse Pacific communities across Aotearoa, who choose the University of Otago as the tertiary destination for their family member.

Our staff are passionate and committed to providing ongoing holistic support to Pacific students through understanding the issues and challenges they face. The Pacific Islands Centre is committed to doing all we can to contribute to their experiences and their academic success here at Otago.

Please read all of the important information in this booklet. We look forward to welcoming you to our family here at the University of Otago.

Mr Tagiilima Feleti
BEd(Tchg) PGDip(ECE Leadership)
Pacific Islands Centre Manager



21,000+ students
with approximately
1,250 Pacific students



NZ's top university for
students' educational
performance



Ranked in the top 1% of
universities worldwide
*QS world university rankings



14 residential colleges



Highest rating for
quality and excellence



85% of students from
outside Dunedin



Pacific On-campus Experience (POCE) students and mentors, Tertiary Open Day



YOUR ENROLMENT AND ACCEPTANCE

1

Has my enrolment been confirmed?

Make sure that you have accepted or declined any offer of place in your chosen programme, and that you have picked your papers within eVision (otago.ac.nz/evision). If you have any enrolment or admission queries please contact AskOtago.

Tel 0800 80 80 98 Email university@otago.ac.nz

If you need help with this give us a call 0800 80 80 98 ext. 8278 or email pacific@otago.ac.nz

2

Where is Dunedin?

Start researching the place you will soon call home – Dunedin.

Go online dunedin.govt.nz and otago.ac.nz/pacific and also read all the information packs that have been sent to you. We recommend doing this with your parents – show them the photos and discover Otago together – to ensure everyone is on board. After all, your journey is their journey and your success is their success!





3

What do I know about the University of Otago?

The University of Otago, founded in 1869 by an ordinance of the Otago Provincial Council, is New Zealand's oldest university. The new University was given 100,000 acres of pastoral land as an endowment and authorised to grant degrees in Arts, Medicine, Law and Music.

Today, the University looks quite different. The University's main campus is in Dunedin, with campuses in:

- Christchurch (Health Sciences, established 1972)
- Wellington (Health Sciences, established 1977)
- Auckland (Information and Teaching Centre, established 1996)
- Invercargill (Education and Health Sciences, established 1980) Otago is also a significant provider of programmes taught by distance.

Feeling excited?

Now familiarise yourself with the Orientation Programme and helpful "arriving here" information provided in this booklet, designed especially for you and your family. Memorise the dates and events and carry this with you all the time. If you're in doubt, we are here to answer your questions before you arrive. Go ahead – read and enjoy finding out about your exciting journey ahead!



Otago University Fijian Students' Association during Pacific Week

TRANSITION AND ORIENTATION

Living away from home and going to university is a lot different to secondary school. Luckily, there is a lot of support in place at the University of Otago for first-year students. To ensure that your transition into university life is a smooth one, get involved!

- Join in our Orientation programmes to ensure you are familiar with all the support services and programmes here at Otago.
- Sign up to be a member of a club or society. There are many cultural, sporting, and academic options to choose from, including clubs associated with the Pacific Islands Centre. Sign-ups usually happen at “Tent City” during O-Week.
- Another great way to meet people and get to know Dunedin is by volunteering in the community. Many colleges do their own volunteer work, but be sure to like UniCrew volunteers on Facebook so you can stay informed about the many great volunteering opportunities available in 2022.
- Attend the UNI 101 lectures, which are specifically planned to help you transition from living at home to living independently here at Otago, and from studying at school to studying at university! Your success will depend on how well you complete these transitions.



Otago Pacificana performing at the University of Otago Pacific Welcome

Otago Pacificana: Choir and performing arts

A great way to meet new friends and settle into university is to join our Otago Pacificana. Join in and become part of the family. For more information or to sign up, contact the Pacific Islands Centre staff:

Tel 03 479 8278

Email pacific@otago.ac.nz



SETTLING IN

Important documents to bring

- Original birth certificate or witnessed copy
- A photo identification such as passport, driver licence or 18 Plus Card
- IRD number and Community Services Card
- Necessary academic records (NCEA or other results)
- Medical prescription (if you have a medical condition).

Clothing and personal items to bring

Don't pack too much. We have a lot of great stores in Dunedin where you will receive lots of student deals!

- A good warm jacket – casual (for uni) and formal (for Church)
- Puletasi, sulu, alo'a (cultural wear) for Church and formal functions
- Changes for two weeks which you could alternate until they wear out and then visit a local good second-hand shop in Dunedin
- 1 pair each of good walking shoes, sandals and formal shoes
- Toiletries (i.e. shampoo, conditioner, toothbrush, toothpaste, etc)
- If you are moving into a residential college, make sure you know what items will be provided for you
- If you intend to go flatting, you can get cheaper beds from second-hand shops or visit studentfurniture.co.nz
- A light but warm mink blanket, towels and an extra pillow if you want
- And don't forget your Bible.



Airport arrival

There will be a Help Desk at the Dunedin Airport awaiting your arrival and it can assist you with any queries.

Take the airport shuttle as they have specials for students and groups. A shuttle costs \$15 per person and a taxi will cost \$90.

Book in advance if you can! You can do so online at supershuttle.co.nz or phone 0800 748 885.

Accommodation

The friendly staff at the Student Accommodation Centre can assist you with:

- Residential college applications
- Applications for the University Flats
- Rental accommodation solutions

For general accommodation queries phone 64 3 479 5100 or email accommodation@otago.ac.nz

StudyLink

To ensure you receive your student loan and/or allowance on time, make sure you apply early. Contact StudyLink for information and application material. Visit studylink.govt.nz

NEED HELP?

Before you come

The Pacific Islands Centre staff will be available any time during your preparations before moving to Dunedin.

On campus

Spot a yellow t-shirt mentor – they will answer your questions and act as a tour guide during Orientation week.

DOs AND DON'Ts OF ORIENTATION WEEK

DOs

Do make friends

Get to know your neighbours/ flatmates/ roommates/ Residential Assistants (RA). That way, if anything happens, you have people you are familiar with around you who can help you.

Do dress warmly

Dunedin weather is known to students for its “four seasons in one day”, so get ahead of the freshers ‘flu and stay warm.

Do have fun

Get out and explore Dunedin, make sure to go together with friends, watch out for one another.

Sign up for clubs and OUSA short courses (see OUSA Recreation Guide for more information).

Step out of your comfort zone, try new hobbies and meet great people!

Do be responsible

Why drink if you’ve never done so before? But if you are tempted, be responsible.

Make sure you have important phone numbers such as Campus Watch, Student Health and the Pacific Islands Centre saved to your phone.

DON'Ts

Don't waste money

O-Week is an exciting time; especially with StudyLink rolling in, you can get carried away with purchases. Spend your money wisely, e.g. don't be tricked by flash mobile deals that would see you broke during the year.

Don't fall behind

You have made it to university! Look at it as a job. If you work at your studies with an “8 to 5” attitude there will be plenty of time to socialise.

Don't do it alone

You are never alone, there are helpful staff on campus trained to assist you with anything.

At the end of O-Week and throughout the year make sure you keep your family and friends back at home up-to-date. Call, email or even write a letter to tell them about your adventures.

Don't struggle alone

The Pacific Islands Centre is open Monday to Friday, 8:30am–5pm. Take a break, come have a chat and stay connected.

PACIFIC FIRST-YEAR STUDENTS' ORIENTATION: GROWING PACIFIC SCHOLARS (GPS) PROGRAMME 2022 THURSDAY 17-FRIDAY 18 FEBRUARY

Due to the national shift to the Red setting of the COVID-19 Protection Framework. This programme will be delivered online via Zoom. Please see below for details.

DAY ONE | THURSDAY 17 FEBRUARY

10am–12pm **Introduction to university**
Come and hear about how to best prepare for university.
Meeting ID: 972 1019 1980
Passcode: 682174

DAY TWO | FRIDAY 18 FEBRUARY

10am–11am **Meet your division**
Come and Zoom with the support staff in your division to learn about all the amazing support available.

Humanities
Meeting ID: 954 0893 8021
Password: 067152

Commerce
Meeting ID: 956 2171 1505
Password: 526062

Sciences
Meeting ID: 961 1151 4462
Password: 008776

Health Sciences
PIRSSU will email you a link



Students volunteering for the city's beach clean up.

ESSENTIAL FORUMS FOR FIRST-YEAR PACIFIC STUDENTS

GROWING PACIFIC SCHOLARS FIRST YEAR ORIENTATION

We look forward to meeting all new Pacific students at the Growing Pacific Scholars First-Year orientation. Come along for an informative and enjoyable session of getting to know fellow students and key staff at the University of Otago. This is an essential forum for all new students, so be sure to pencil this in your calendar.

For more information:

Email pacific@otago.ac.nz Tel 03 479 8278

Thursday 17 February 9am | Castle 2

ORIENTATION WEEK

An orientation booklet will be provided.

Monday 21 February–Sunday 27 February

CONVOCATION CEREMONY

All first-year students are invited to the Convocation Ceremony. This is a formal ceremony where first-year students are welcomed to the University. The Convocation Ceremony marks the start of the academic year and provides an opportunity for new Otago students to hear from the leaders of the University and the city. Speakers will include the Vice-Chancellor, the Mayor of Dunedin, and the Students' Association President, along with a guest speaker.

Monday 21 February | 7pm (seated by 6:45pm) | Forsyth Barr Stadium



Playing sport is also a highlight of University life.

UNIVERSITY OF OTAGO PACIFIC WELCOME AFIO MAI – WELKOM – WARM PACIFIC GREETINGS!

This is the annual welcome hosted by University of Otago leaders to officially start the new academic year, and to welcome you to our kainga here at Otago. All new and returning Pacific students and their families are invited to attend.

Official address and welcome by Professor David Murdoch, Vice-Chancellor, University of Otago.

A function not to be missed – hear from University leaders, meet academic and support staff, meet your fellow students and be Pacifically welcomed by our very own Otago Pacificana Performing Arts Group!

Thursday 24 February | 5:30pm start | St David Lecture Theatre

FOFOA ACCOMMODATION ORIENTATION

Orientation day for the 10 students that have been successful in getting a University of Otago Fofoa Accommodation Award.

Sunday 20 February | 10am–4pm | Pacific Islands Centre, 1 Leithbank

FREQUENTLY ASKED QUESTIONS BY PARENTS

My child has never left home before. Who will look out for them?

We are number one in support services for our students. It would be great if you can accompany your child to Dunedin and familiarise yourself with their new home, and meet the academic and support staff.

Do not worry, do let us know, and we will look out for them.

How can I support my child from home?

Understand the course they are enrolled in.

Ensure their rent and fees are up-to-date.

Maintain regular contact with your child to help them focus.

Your prayers are much appreciated.

Who will look after my child when they are sick?

We have a great and affordable Student Health Service established especially for students. otago.ac.nz/studenthealth

Please also let us know as soon as you know when your child is sick. Often students do not share this information with us.

How will I know if my child is passing and doing well?

Ask them and be part of their journey.

Please however note that the Privacy Act 1993 maintains your child's privacy.

Who can I ring if I cannot get hold of my child?

Mr Tagiilima Feleti (Manager, Pacific Islands Centre) 021 279 1296 or during office hours or ring toll free on 0800 80 80 98 and ask for the Pacific Islands Centre.

ARE YOU READY ACADEMICALLY?

- Look up the required text books for your papers (unibooks.co.nz).
- Make sure you have the stationery you require i.e. laptop, pens, notebooks.
- Find your lecture theatres, tutorial rooms and labs.
- Join the Pacific Orientation Library tour to make sure you know how to access the University libraries!
- Make sure you attend your preliminary lectures to find out about the necessary materials and expectations for each of your papers.

Did you know that the University provides academic assistance?

Free tutorials

- These are run by the Pacific Islands Centre and we employ mainstream tutors from academic departments.
- Tutorials are free to all Pacific Island students, except NZAID-sponsored students who have funding to pay for their tutorials.
- Starts in March.
- Times depend on students' timetable and tutor availability to ensure they don't interfere with any of your classes or mainstream tutorials.
- To sign up, visit the Pacific Islands Centre reception during Orientation week and fill in a form.
- Pacific Islands Centre also help to organise study groups.

Taimane Academic Mentoring Programme

- This is run and co-ordinated by the Pacific Islands Centre and the academic divisions. It's aimed at helping Pacific students succeed and maximise their full potential while at Otago.
- See Pacificana booklet for details.

One-on-one discussions with lecturers/staff

Careers advice

Supervised study nights

- Monday–Thursday, 5–7pm at Pacific Islands Centre

KEY STAFF TO CONTACT

The Pacific Islands Centre maintains your privacy, so you can come and discuss anything you require with us – from issues with your course to personal discussions, all in confidence.

Marea Colombo
Tutorials and Academic
Pastoral Support Co-ordinator
marea.colombo@otago.ac.nz



Tameti Teweti
Pacific Students Transition Officer
tameti.teweti@otago.ac.nz



Scotty Opeteia
Pacific Students Transition Officer
scotty.opetaia@otago.ac.nz



PACIFIC ISLANDS CENTRE

Pacific Islands Centre
Email pacific@otago.ac.nz
Tel 64 03 479 8278
Address: 1 Leith Bank,
Dunedin 9016

otago.ac.nz/pacific



▼ Dunedin