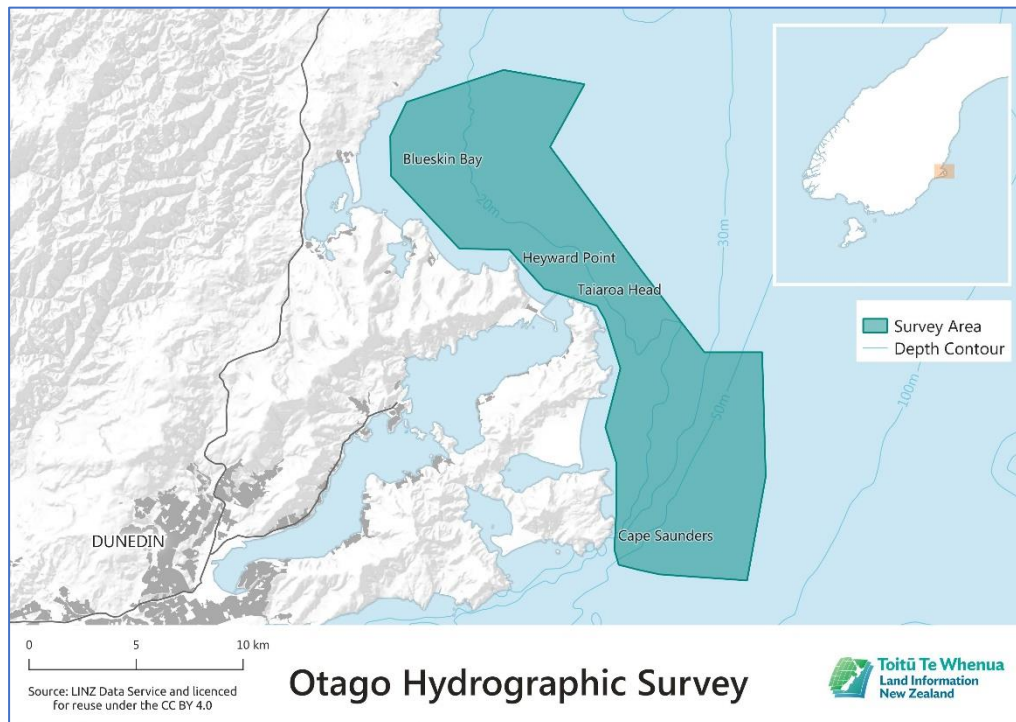


Te Kura Kairūri School of Surveying Lunchtime Seminar Series



Toitū te Whenua LINZ – Seabed mapping of the Approaches to Otago

Brad Cooper, Matanga Tatai Wahi Matua | Senior Geospatial Specialist

New Zealand Hydrographic Authority, Toitū te Whenua LINZ

Adam Knyvett Surveyor in Charge & Chester Rosie Hydrographic surveyor, Ocean Infinity

If you've ever wanted to hop on board a survey vessel, now's your chance! Toitū Te Whenua Land Information New Zealand (LINZ) undertakes hydrographic surveys to produce 3D maps, which support safer shipping. A survey is underway offshore and we'll dial in to the vessel to hear from the crew out on the water. We'll also share about our hydrographic survey programme and how it benefits New Zealand. Hydro surveys collect data about the shape of the seabed that is vital for updating navigation charts to keep people safe, mapping marine habitats, and hazard modelling for floods and tsunamis among other valuable uses.



Thursday 18th July 2024 (12pm – 1pm)

L1 Lecture Theatre | School of Surveying, 310 Castle Street

OR Join remotely: <https://otago.zoom.us/> (ID: 979 1434 6880, P/W: 310310)